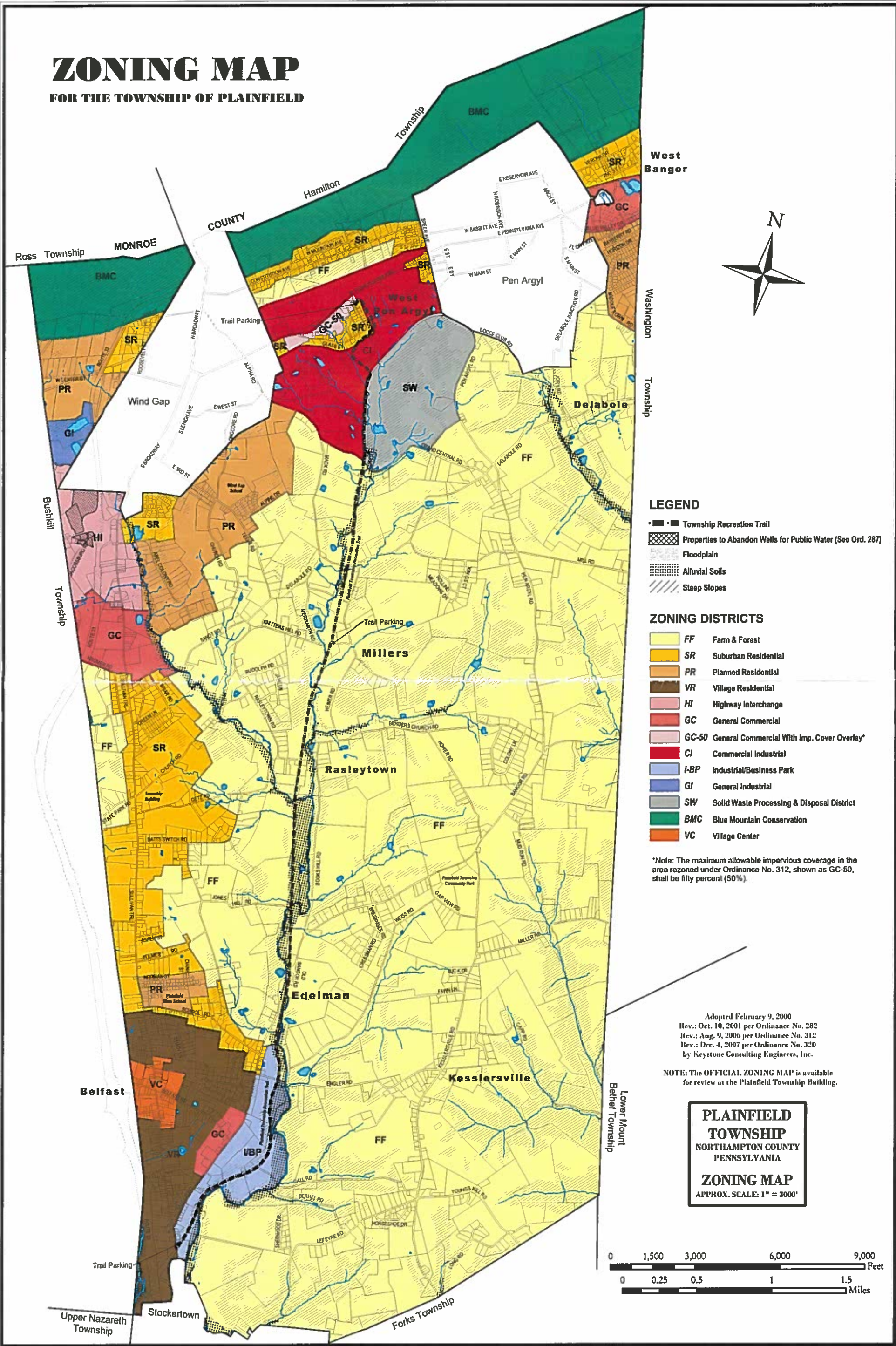


ZONING MAP

FOR THE TOWNSHIP OF PLAINFIELD



LEGEND

- — • Township Recreation Trail
- ▨ Properties to Abandon Wells for Public Water (See Ord. 287)
- ▨ Floodplain
- ▨ Alluvial Soils
- ▨ Steep Slopes

ZONING DISTRICTS

- FF Farm & Forest
- SR Suburban Residential
- PR Planned Residential
- VR Village Residential
- HI Highway Interchange
- GC General Commercial
- GC-50 General Commercial With Imp. Cover Overlay*
- CI Commercial Industrial
- I-BP Industrial/Business Park
- GI General Industrial
- SW Solid Waste Processing & Disposal District
- BMC Blue Mountain Conservation
- VC Village Center

*Note: The maximum allowable impervious coverage in the area rezoned under Ordinance No. 312, shown as GC-50, shall be fifty percent (50%).

Adopted February 9, 2000
 Rev.: Oct. 10, 2001 per Ordinance No. 282
 Rev.: Aug. 9, 2006 per Ordinance No. 312
 Rev.: Dec. 4, 2007 per Ordinance No. 320
 by Keystone Consulting Engineers, Inc.

NOTE: The OFFICIAL ZONING MAP is available for review at the Plainfield Township Building.

PLAINFIELD TOWNSHIP
 NORTHAMPTON COUNTY
 PENNSYLVANIA
ZONING MAP
 APPROX. SCALE: 1" = 3000'

